

# Investing in Our Youth



## 2010 ANNUAL REPORT

New York State 4-H Foundation  
248 Grant Ave., Suite II-A  
Auburn, NY 13021  
(315) 702-8242  
[NYS4-HFoundation@NYS4HFoundation.org](mailto:NYS4-HFoundation@NYS4HFoundation.org)

**VISIT OUR WEBSITE:**  
[www.nys4hfoundation.org](http://www.nys4hfoundation.org)

New York State 4-H youth development programs connect kids to the resources of Cornell University. Programs promote positive youth development, enhance science and literacy, develop life skills, and involve youth in their communities. NYS 4-H Foundation provides equal funding and employment opportunities.

# MISSION

## Message from the Chair

Dear Friends,

It is amazing to think of the reach that 4-H has today! With more than 6 million youth and adults involved across the nation, 4-H is a real force of positive youth development.

Here at the NYS 4-H Foundation, we get to hear first-hand about the impact of 4-H. We hear from Foundation scholarship winners who tell us how 4-H shaped their learning, excited their imaginations, inspired their sense of responsibility, bolstered their confidence and introduced them to a world of opportunities they otherwise would never have experienced.

We hear directly from 4-H'ers who tell us how much they learn on the Foundation-funded trips to observe government in action in Albany and Washington. We hear from 4-H'ers who tell us they appreciate a Foundation grant-supported 4-H afterschool program because they learned about nutrition and how to cook, which means they can help their families more at home.

We also hear from staff and volunteer leaders who tell us how programs the Foundation supports have given youth the chance to learn in a hands-on way that resonates with them, or thrive on a team for the first time.

These examples represent the very real positive impact that 4-H is having across New York. The NYS 4-H Foundation is able to support and expand this work because of the generosity of our donors. We appreciate all that you have done in the past and look forward to a continuing partnership as we work to increase opportunities for youth.

Sincerely,



Tom Facer, Chair  
NYS 4-H Foundation

---

## Board of Trustees

Thomas Facer, Chair  
*President, Farm Fresh First*

J. David Ferris, Vice Chair  
*Chief Executive Officer, P. W. Wood & Son, Inc.*

Karen Cartier, Treasurer  
*Director of Communications, Dairylea Cooperative*

Barbara Schirmer, Secretary (Ex-Officio)  
*NYS 4-H Program Leader*

Donald Bay  
*Investor*

Drew Coyne  
*Manager, The CaseWay Agency*

Helene Dillard (Ex-Officio)  
*Director, Cornell Cooperative Extension*

Jeffrey Eades  
*Vice President, Senior Relations Manager, KeyBank*

Ellen Elliott  
*Principal, A & E Consulting*

Megan Galbraith  
*Principal, Megan Galbraith Associates*

Debbie Grusenmeyer  
*Extension Associate, Cornell University*

Linda Keech  
*Executive Director, Cornell Cooperative Extension, Dutchess County*

Emma Long (Youth Representative)  
*4-H Alumna, Cornell Student*

Ronald Pope  
*Ronald Pope Agricultural and ABC Self-Storage Facilities*

Sally Prather  
*Principal, Mercer Heath & Benefits*

Amanda Trzcinski  
*Operations Management Trainee, Ronnybrook Farm Dairy*

The New York State 4-H Foundation cultivates, secures, and stewards financial resources to support the Cornell Cooperative Extension New York State 4-H program in developing and delivering superior 4-H youth development programs.

Founded in 1949 as a 501 (c)(3) not-for-profit organization, the NYS 4-H Foundation supports 4-H youth development activities throughout New York State through tax-deductible donations. Funding is primarily directed to:

- 1) State Program Initiatives
- 2) Grants for County 4-H Programs
- 3) Opportunity Scholarships for youth.

The Foundation is governed by an elected Board of Trustees, including young trustees.

**Foundation Staff**  
Elizabeth Searle,  
Director of Development

# Cornell Cooperative Extension

## 4-H Youth Development

*Building Character and Competence in youth by developing Partnerships and Resources*

### The Mission

Cornell Cooperative Extension's 4-H Youth Development program creates supportive learning environments in which diverse youth and adults reach their fullest potential as capable, competent and caring citizens.

### The Goals

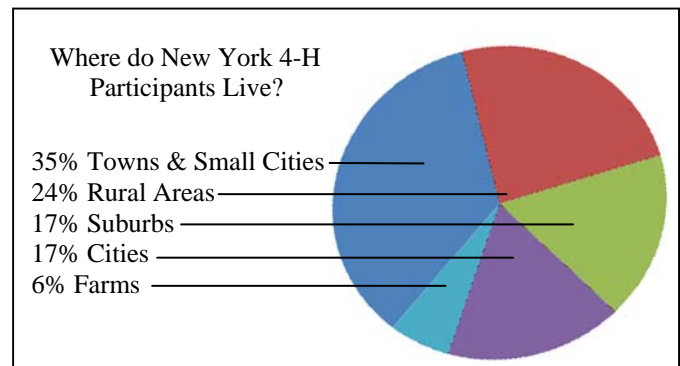
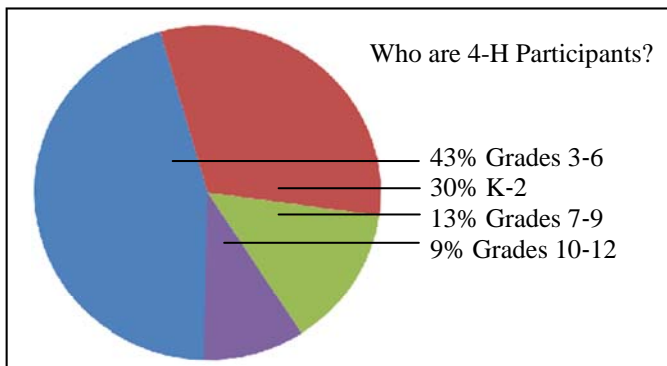
- To engage young people in the work of the Land-grant university.
- To teach knowledge and life skills which enhance quality of life.
- To create opportunities which promote positive youth development.

### 4-H Youth Development creates opportunities for youth to experience:

- Independence (*using their heads*)
- Generosity (*using their hands*)
- Belonging (*using their hearts*)
- Mastering (*using their health*)

---

## 4-H by the Numbers



In 2010 112,914 young people were reached with more than 6 hours of 4-H youth development programming. An additional 81,309 youth participated in projects that were less than 6 hours in length. A variety of “delivery modes” address diverse youth needs and interests. These include: 4-H clubs; In-School Clubs; After-School Clubs; Military Clubs; Special Interest/Short Term Programs; School Enrichment; Individual Study/Mentoring; School-Age Child Care Programs; and Day and Overnight Camping.

### The 4-H Areas of Emphasis and 2010 participation were:

- Science, Engineering and Technology – 101,809
- Citizenship – 35,484
- Healthy Lifestyles – 19,353

4-H'ers in NY greatly benefited from the investment of time and effort of 16,880 volunteers.



## State Program Initiatives *The Foundation provides financial support to several statewide 4-H programs coordinated through the State 4-H Office. The following were funded in 2010:*

### Public Presentations

**\$1,000**

The state public presentation program was held at the New York State Fair in August with 93 participants from across New York. Many 4-H alumni credit this program as one of the most important life skills that they gained through their 4-H experience.

### NYS Resource Directory

**\$1,400**

The Directory is the online resource for all educational curriculum and materials that support 4-H programs in the state. Foundation funds support the maintenance and expansion of the directory.

### National 4-H Conference

**\$5,000**

At the invitation of the Secretary of Agriculture, four NYS youth gathered with youth from across the nation to share ideas and form recommendations to guide future 4-H programs nationally and in their communities.

### Program Work Team Support

**\$500**

Program Work Teams support the three mission mandates in 4-H for Science, Engineering and Technology (SET), Healthy Lifestyles, and Youth Community Action. Teams, composed of 4-H educators and Cornell Faculty, meet throughout the year to develop programs, identify educational resources, and support professional development for staff and volunteers. Funding from the Foundation enhances the work of the Program Work Teams.

### Public Relations and Marketing

**\$3,000**

Funds supported several projects including providing materials for 4-H Science Toolkits, the National 4-H Resource Directory, Capital Days and 4-H Camps.

### NYS Regional Volunteer Forums

**\$2,000**

This provided partial support for regional volunteer educational forums across the state.

### NYSACCE4-H Conference Support

**\$500**

The Foundation was pleased to provide support to this annual conference for 4-H educators. Foundation funds provided a speaker at the event.

### Special Projects

**\$1,400**

Foundation funds supported youth participating in Capital Days in Albany, NY and also underwrote a 4-H Growing Green initiative.

### Volunteer Recognition

**\$200**

Since volunteers are the backbone of the 4-H club program in New York State, special recognition is given to outstanding volunteers each of the 12 days at the New York State Fair. Recipients are nominated by their county educators, presented with a recognition certificate and small gift and have the distinction of being named the "Volunteer of the Day."

## Grant-Funded Programs Started in 2010

### 4-H After School Program CCE of Chenango County

**\$10,000**

This grant is making it possible for the Chenango County CCE office to expand their 4-H After School program from 2 locations to up to seven, serving potentially four times more students. The program will enrich current school educational endeavors with the hands-on experiential learning style of 4-H using 4-H curriculum and projects. Ten new project kits will be created for use with middle school through high school age students to teach youth in-depth agriculture and forestry topics.

### Get SET...Science is Everywhere! Program CCE of Nassau County

**\$10,000**

Nassau County CCE Staff is using this grant to strengthen science literacy and develop related skills competencies by collaborating with 15-20 after school program sites, conducting 120 classes for 360 youths from low-to middle-income families. This will expand their program reach from one community in the county to an additional four communities.

### Building Capacity for Quality SET Programs NYS 4-H Office

**\$9,850**

Opportunities for youth to be involved in Science, Engineering and Technology (SET) learning is being greatly expanded by this project that will create new, and enhance existing, Science Toolkit curriculum; train 50 CCE educators in the use of the curriculum and appropriate science education methods; and make the toolkits and training resources available through the internet.



*"The New York State 4-H Foundation Grant gives us the opportunity to offer educational programming at little to no cost to school districts." Chenango County CCE Agriculture Educator Janet Pfromm.  
-The Evening Sun, March 1, 2010*

## Grant-Funded Programs Completed in 2010

### **Ready, SET, Go! Kits**

**\$5,000**

#### CCE of Schenectady County

By creating “grab and go” 4-H SET lesson kits, this program aimed to increase knowledge about science, engineering and technology topics through the use of experiential learning and research-based information. As a result of this initiative, 367 youth were educated using lessons from the kits in a variety of settings. Additionally, forty-two teachers and fifteen graduate students were exposed to the kits. A total of ten kits were developed and several were piloted during this grant.

### **Military Families Project: Defiant Gardens/Civic Ecology Program**

**\$3,700**

#### CCE of Jefferson County

In cooperation with the Jefferson County Department of Social Services and the Cornell University Department of Natural Resources, the New York State 4-H Foundation provided funding to continue the Defiant Gardens/Civic Ecology Program. The goal of this partnership is to help communities deal with the stress of the military deployment cycle. Currently there are eight garden sites in Jefferson County with the 10<sup>th</sup> Mountain Division, a site in Oneida County with the 107<sup>th</sup> Military Police Company located in Utica, and the 153<sup>rd</sup> Troop Command Brigade in Buffalo. There are also approximately 22 EarthBox gardens in Afghanistan. This program serves over 200 families and soldiers.

### **4-H Camp Overlook GPS/GIS Program**

**\$3,100**

#### CCE of St. Lawrence & Franklin Counties

Over 800 campers attend 4-H Camp Overlook in Malone, NY, annually. The campers, boys and girls ranging in age from 8-19, each had the opportunity to take the weeklong GPS/GIS class. The basic GPS training combined learning new technology with fun activities. Campers used their new skills to participate in geocaching, treasure hunts, and played GPS Bingo. Camp Overlook will continue to offer the GPS/GIS class to campers in years to come.

### **Healthy Kids Healthy Families Project**

**\$3,000**

#### CCE of Madison County

As part of the Choose Health 4-H initiative, Madison County 4-H worked in collaboration with two libraries and reached approximately 20 early elementary age children. Five teens were involved with teaching the Healthy Kids summer program, with the help of adult volunteer mentors. This program continued beyond summer, with teen leaders presenting several lessons at their school health fair, the local YMCA, and other local events.

### **Breaking Out: Poultry Incubation & Embryology Program**

**\$1,400**

#### CCE of Tioga County

An enhanced poultry incubation and embryology program was launched because youth desired more education in this area. Half of the youth involved in the program were new 4-H'ers who joined because of this program. Participants were so enthusiastic about the program that some are studying poultry science further by raising their own chickens to show at local fairs, and hatching different types of birds to compare their development.



*Sarah Barden*

*“... I belong to the 4-H Community. I have met teens from across the county and from across the state whom I would otherwise have never met, and from whom I have learned many things. Some live on farms and raise chickens; some are home-schooled and know how to bake bread; some are from big cities and know how to build houses. All are 4-H'ers, and I am proud to be among them.”*

*-Sarah Barden, 2010*

*Opportunity Scholarship Recipient*

# Opportunity Scholarships

*Ten outstanding 4-H'ers received \$1,000 NYS 4-H Foundation Opportunity Scholarships. The achievements of the 53 4-Hers who submitted applications and were considered for the scholarships shows the great work that is being accomplished by our young people in 4-H.*

## **Sarah Barden, Tompkins County**

Sarah's 13-year 4-H experience has focused on public presentations, communications and teen leadership. Her love for speech, communication and teen leadership has led to her serving as a key leader on the Tompkins County Fair Board, working at the New York State Fair, and as a Tompkins County Teen Ambassador. Sarah attends the University of Albany where she is pursuing her interest in communications, rhetoric and Chinese.

## **Cassandra Chittenden, Columbia County**

Cassandra is a 12-year 4-H member who has focused on the dairy program and public speaking. She has been a delegate at the National 4-H Dairy Conference, a member of the selective statewide Junior DAIRY LEADER program, Columbia County Dairy Princess, and a member for the Jersey Youth Academy. Cassandra's involvement with the family farm, the dairy industry and the 4-H Dairy program influenced her decision to pursue an Animal Science major at Cornell University.

## **Marissa Horton, Clinton County**

Marissa has 11 years of 4-H experience in public speaking, community service and the horse program. Growing up on a small farm, she has cared for many types of animals. Her 4-H learning opportunities in research, animals and careers, plus her personal experience of caring for injured animals, influenced her decision to pursue a career in veterinary medicine. Marissa is attending Cornell University where she majors in Animal Science and plans to pursue a career as a large animal veterinarian.

## **Emily Knight, Chautauqua County**

In her 11 years in 4-H, Emily has focused her time in the dairy program and public presentations. She grew up on a dairy farm and used her public presentation experience to become a better communicator and to overcome her shyness in talking in front of crowds. With a desire to communicate about the world of animal sciences to the public, and to be a voice for the farming community, Emily attends Cornell University and is pursuing her career interest in communications, English, and agricultural journalism.

Catch the latest news about the NYS 4-H Foundation by visiting our website at [www.nys4hfoundation.org](http://www.nys4hfoundation.org)

"My mother is delighted to tell people our story of her former, non-verbal child and how she overcame her disability to compete at the state level in (4-H) Public Presentations, and has spoken before the NYS Senate. I am proud to have been in 4-H for my youth. I will be proud to be a 4-H leader."

-Courtney Weis, 2010

## **Claudette Martin, Rensselaer County**

Over the past 14 years Claudette has focused her 4-H experience in poultry, sewing and public speaking. She has gained important life skills that include planning, budgeting, and the confidence to step out of her comfort zone. Claudette's 4-H experiences have given her a greater appreciation of the world, leading her to combine her love of sewing with environmental awareness, to pursue a career in apparel design/environmental science at SUNY College of Environmental Science and Forestry. Her goal is to design apparel using renewable resources.

## **Miriam Nestle, Washington County**

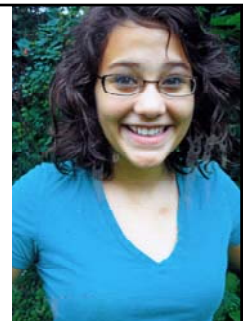
As an 11-year 4-H member, Miriam's interests have included food and nutrition, clothing and textile, outdoor education, and raising sheep. She grew up on a small farm with various animals and has participated in many 4-H programs including 4-H Teen Council and Exchange programs, along with trips to NYS Capital Days and the National 4-H Center. Miriam attends SUNY Brockport where she is pursuing her interest in youth and their education.

## **Jared Reed, Rensselaer County**

Jared is an 11-year 4-H member who has focused his 4-H work on public speaking, recycling and leadership opportunities. He knew at a very early age that he wanted to work in marine biology and has participated in many programs available to him both in 4-H and in his community, working towards achieving this goal. Jared is attending SUNY Stony Brook where he is putting his math and science skills to good use in his pursuit of a career in marine (vertebrate) biology.

"I know that no matter what I decide to do in my life, the skills and experiences that I have had through 4-H will remain with me forever."

-Stephanie Supa,  
2010 Opportunity Scholarship Recipient



## Opportunity Scholarships continued

### Stephanie Supa, Broome County

In her 13 years in 4-H, Stephanie has been very involved in dairy, poultry and sheep programs, even though she did not grow up on a farm. She has participated in the National 4-H Dairy Bowl, as a Dairy Princess, and as captain of NYS Dairy Bowl Team. Stephanie is pursuing her interest in agriculture education and animal science at Cornell University. She also educates people about the importance of agriculture and 4-H by working for the Tompkins County 4-H program.

### Matthew Sweeney, Niagara County

Growing up on a dairy farm, Matthew has been active in 4-H dairy, swine, and food and nutrition programs for 12 years. With his love for dairy and not being in a position to compete as a dairy princess, he created and was selected for the position of Dairy Dude. He held the position for 4 years, traveling to schools, stores and other community events educating and promoting the dairy industry to the public. Matthew feels the 4-H program has sculpted and shaped him into a well-rounded individual. He attends Cornell University where he is pursuing his interest in agricultural education.

### Courtney Weis, Ulster County

Throughout her 12-year 4-H career, Courtney has focused much of her time in the dog, clothing and nutrition programs. She has overcome a learning disability and excelled because of 4-H and its hands-on approach to learning. Leadership roles include serving on the County 4-H Strategy and Family and Consumer Science Committees. In the community she teaches disadvantaged youth basic life skills. Courtney studies criminal justice/law enforcement at SUNY Ulster.



**2010 Opportunity Scholarship Recipients**

Front row: Matthew Sweeney, Jared Reed, Marissa Horton  
 Back Row: Cassandra Chittenden, Emily Knight, Claudette Martin, Miriam Nestle, Courtney Weis  
 Missing: Sarah Barden, Stephanie Supa

## Special Events

The annual 4-H Open Golf Tournament is the Foundation's key fundraising and friend-making event. The 22<sup>nd</sup> Annual 4-H Golf Open was held on Friday, June 4<sup>th</sup> at the Country Club of Ithaca. The event was a great success. Thanks to our participants, volunteers and sponsors, the Open raised more than \$16,000 to benefit 4-H youth across the state. J. David Ferris, founder and long-time tournament chair, was recognized as the Honorary Chair. Jamie Ferris and Jim Alo co-chaired the volunteer committee that organized this outstanding event.

*Congratulations to our winning teams!*

### Flight 1

- 1<sup>st</sup> Place: E.C. Cooper Team
- 2<sup>nd</sup> Place: Philadelphia Insurance Team
- 3<sup>rd</sup> Place: Porter Team

### Flight 2

- 1<sup>st</sup> Place: Preferred Mutual Insurance Team
- 2<sup>nd</sup> Place: Seneca Foods Team
- 3<sup>rd</sup> Place: Holtz-Nelson Dairy Consultants Team

### Flight 3

- 1<sup>st</sup> Place: CDLM & Company Team
- 2<sup>nd</sup> Place: Dairy Marketing Services
- 3<sup>rd</sup> Place: Fisher Team



Pratt Trophy Winner— Team Applebee

### Pratt Trophy Winner: Team Applebee

- Glenn Applebee
- Jim Applebee
- Craig Trowbridge
- Jen Holleran

### Special thanks to our major sponsors:

- P. W. Wood & Son, Inc.
- Philadelphia Insurance Companies
- New York Farm Bureau
- Farm Credit East, ACA
- John Mitchell



Honorary Chair Dave Ferris

## Endowment & Restricted Funds

Donors may designate gifts for specific purposes or make donations to honor individuals. The 4-H Foundation manages the following restricted and endowment funds, including some for County Associations. Assets at the end of fiscal year 2010 are noted.

### **Capital Campaign**

**\$158,814**

Funds a number of statewide 4-H programs.

### **Cheney Tribute Fund**

**\$10,325**

The Bill and Rhea Cheney fund supports 4-H in Oswego County, where Bill was a 4-H agent.

### **Delaware County 4-H Endowment**

**\$150,000**

This fund supports 4-H programs in Delaware County.

### **DeNise 4-H Fund**

**\$332,540**

This fund provides general support of statewide initiatives.

### **Evans Leadership Development Fund**

**\$16,496**

Through a gift from Merton P. and Betty J. Evans of Canton, NY, this fund was established in 1994 to support leadership development of adult and youth volunteers.

### **General Endowment Fund**

**\$55,523**

This fund provides general support for approved 4-H youth development programs and initiatives, which benefit all Cornell Cooperative Extension Associations.

### **Harold A. Willman Animal Science Fund**

**\$189,881**

Established to honor Professor Emeritus Harold A. Willman, former 4-H Animal Science Specialist, this fund supports a variety of animal husbandry programs, including livestock judging, demonstrations, and recognition awards.

### **Harper Scholarship**

**\$32,143**

Established by the family of Ralph and Genevieve Harper in Monroe County to support college scholarships.

### **International Youth Development**

**\$12,214**

Supports scholarships for international exchange programs.

### **Lamar Leadership Award Fund**

**\$10,516**

Established in honor of Ralph E. Lamar, this funds scholarships in Orange and Suffolk Counties.

### **NYS Leadership Award Fund**

**\$24,019**

Contributions of \$100 or more honor those who have made significant contributions to the 4-H mission. Earnings support leadership development.

### **Livingston County 4-H Endowment**

**\$49,601**

Supports Livingston County 4-H programs.

### **Montgomery County 4-H Endowment**

**\$48,383**

Established by Constance Davis DuCanto, this supports 4-H programs in Amsterdam, NY.

### **Nancy Widen Swart Memorial Endowment**

**\$13,938**

This memorial fund supports 4-H Youth Development programs in Erie and Schoharie Counties.

### **NYS Association of CCE 4-H Educators Fund**

**\$44,991**

Income from this fund supports the mission of the 4-H Educators' Association.

### **Oneida County 4-H Endowment**

**\$40,110**

Established in honor of Harvey B. Bowman, this funds Oneida County 4-H programs.

### **Ontario County 4-H Scholarship Fund**

**\$21,000**

This supports Ontario County 4-H Scholarships.

### **Standardbred Horse Program**

**\$42,005**

This 40+ year collaboration with the Agriculture and NYS Horse Breeding Development Fund supports education programs that include Tours and Clinics, the Kids and Horses Tent at the NYS Fair, and other education programs.

Catch the latest news about the NYS 4-H Foundation by visiting our website at [www.nys4hfoundation.org](http://www.nys4hfoundation.org)

## Donald Bay - 2010 Friend of Extension

Each year, a Friend of Extension is chosen by consensus among the senior leadership of CCE Administration and the Board of Lambda Chapter, Epsilon Sigma Phi with guidance provided by the definitions of the word “friend.” A friend is:

- a person known well and held in high regard
- a person committed to the values and mission of the organization
- a person on the same side of a campaign or struggle - in this case, betterment of the lives of New Yorkers
- a person who is willing to challenge when challenge is needed, and
- a person who generously gives assistance and support.

The 2010 Friend of Extension, Donald M. Bay, has truly “demonstrated individual initiative, self-determination, and leadership...in the interest of society.”



*Helene Dillard and Craig Trowbridge, President of Lambda Chapter, ESP, present Don Bay with the 2010 Friend of Extension award.*

He has been an exceptional leader for New York agriculture and the “ultimate” encourager of rural and 4-H youth during his long association with CCE.

Don grew up on a dairy and crop farm in Ontario County and began a career in farming that was cut short by polio in 1951. Having to redirect his interests, he attended and graduated from the Cornell University College of Agriculture in 1955 majoring in agricultural economics and animal husbandry. Don’s early career was in agricultural lending and he became a Vice President and Commercial Lending Officer for Security Trust of Rochester. He received his master’s degree from the University of Rochester’s School of Business Administration in 1964. Don began a new career chapter in 1966 to become general manager of Genesee Valley Cooperatives and when it consolidated with Upstate Milk Cooperatives, Inc., Don was named general manager of the new organization serving until 1988. In 1990, he became general manager of Empire Livestock Marketing Cooperative which he held for three years. For the past 13 years, he has worked with his daughter, Susan Sharp, to manage family investment portfolios.

Don has been very active in community and alumni groups and state and national agricultural organizations. His keen interest in and knowledge of dairy cattle provided him with the opportunity to become a distinguished dairy cattle judge in New York, the northeast and even Argentina. Earlier this year, he received the Distinguished Service Citation from the New York Agricultural Society.

Don has been a member of CCE of Ontario County for more than fifty years and is the longest serving member of the NYS 4-H Foundation’s Board of Trustees. He has served as the Trustee’s Board Chairperson and is currently Chair of the Audit Committee. He was very involved in the Foundation Capital Campaign that helped to increase its assets to beyond the million dollar mark. In 1977, Don was the first recipient of the NYS 4-H Foundation’s “Partner in 4-H Award” and received the Award of Merit from the NYS Agricultural Agents Association in 1982. Don has a true passion for 4-H programs and has been instrumental in expanding opportunities for youth by establishing connections for private support from the agricultural community.

In his remarks after receiving the FOE award, Don said, “I came to Cornell almost by accident and the gifts they (CALs) gave to me motivated me to want to give back.” By any measure, Don is a true Friend of Extension.

*By Ellen Abend, photo by Paul Treadwell*

Note: Don concluded his service as a Trustee of the NYS 4-H Foundation at the end of 2010 after a total of 29 years of service over four decades. The Foundation is grateful for his years of leadership and support.

## Thank You to Our Friends

### **State Leader's Club**

*\$25,000 and up*

Agriculture & NYS Horse Breeding  
Development Fund  
Estate of Margaret Sorensen

### **Crystal Clover**

*\$5,000.00 to \$9,999.99*

P. W. Wood & Son, Inc.

### **Emerald Clover**

*\$2,500.00 to \$4,999.99*

Buffalo Bills Youth Foundation  
Mary C. Morse

### **Platinum Clover**

*\$1,000.00 to \$2,499.99*

Prof. Roy Curtiss, III  
Ms. Ellen P. Elliott  
Mr. Thomas Facer  
Farm Credit East, ACA  
Gramco, Inc.  
Mr. John Mitchell  
New York Farm Bureau  
Philadelphia Insurance Co.  
Mr. Ronald J. Pope  
Seneca Foods Foundation

### **Gold Clover**

*\$500.00 to \$999.99*

Mr. Daniel J. Aneshansley  
Mr. Steve Barnes  
The Burrows Little Falls  
Foundation  
Cornell CCE Administration  
Dairy Marketing Services, LLC  
Dr. Helene Dillard  
Earthwise, Inc.  
Finch Family Farm Fund  
Mr. Robert K. Hill, Jr.  
Mr. David J. Hillmann  
Holtz-Nelson Dairy  
Consultants, LLC  
Mr. Thomas K. Jeffers  
Prof. Harry M. Kaiser  
Land O'Lakes Feed  
Mr. Thomas E. Porteus

### **Preferred Mutual Insurance Company**

Ms. Barbara Schirmer  
Mrs. Elizabeth Searle  
Mrs. Cindy D. Wilkinson

### **Silver Clover**

*\$250.00 to \$499.99*

Prof. Steven V. Beer  
Blue Seal Feeds, Inc.  
Ms. Nancy M. Caswell  
Mr. Jeff Dobbin  
Mr. Michael Duttweiler  
Erie & Niagara Insurance  
Association  
Mr. Jeffrey Fredrickson  
George B. Bailey Agency, Inc.  
Mr. Marvin L. Gregg  
Ms. Tama J. Gresco-Sauers  
Mr. Ralph R. Harper  
Mrs. Susan E. Lynch  
Dr. Jane W. McGonigal  
National Fuel Gas Company  
Foundation  
Ms. Dana Palmer  
Mr. Richard H. Porter  
Mr. Albert J. Read  
Saratoga Sod Farm  
Dr. R. David Smith  
Mr. Shawn R. Tiede

### **Bronze Clover**

*\$100.00 to \$249.99*

Mr. Robert V. Abarno  
Rod, Bill and Bob Acomb  
Mr. & Mrs. David J. Allen  
Mr. Joseph Alo  
Ms. Dena L. Altavilla  
Arm and Hammer Animal  
Nutrition  
Ms. Dianne Baker  
Mr. Jeffrey Bishop  
Mr. Robert W. Bitz  
Mrs. Lucy Bliss  
Mr. & Mrs. Kermit Bossard  
Mr. John F. Bowe  
Ms. Margo A. Bowerman  
Mrs. Mary Lou Brewer

### **Britton Insuring Agency, Inc.**

Mr. Dan Brown  
Mr. Courtney B. Burdette  
Mr. Leon N. Button  
BVR Construction Company, Inc.  
Mrs. Virginia B. Calkins  
Mr. Robert V. Call  
Mrs. Celeste Carmichael  
Ms. Karen Cartier  
CFCU Community Credit  
Union  
Mrs. Arlene Chamberlain  
Mr. Richard A. Church  
Mr. Norman D. Coe  
Mrs. Charlotte Coffman  
Mr. Gerald S. Cohen  
Mr. Donald R. Collins  
Mrs. Marilyn Corwith  
Mr. Robert Cree  
Mrs. Susan Czap  
Mr. & Mrs. Stephen D.  
D'Arrigo  
Mr. Timothy Scott Davis  
Ms. Jacqueline Davis-  
Manigault  
Mrs. Joel DeCloux  
Mr. Calvin S. DeGolyer  
Ms. Margaret DiLella  
Ms. Lauren Laird Drum  
Ms. Roxanne L.  
Dueppengiesser  
Ms. Linda K. Earley  
Mr. J. David Ferris  
Fingerlakes Construction  
First National Bank of Dryden  
Mr. Joseph L. Fisher  
Ms. Susanne G. Fisher  
Mr. Rodney A. Flinn  
Mr. Donald R. Fox  
Mrs. Shirley Garrison  
Mr. Terry Gifford  
Mrs. Alice Goebel  
Ms. Jean T. Griffiths  
Deborah Grusenmeyer  
Mr. Daniel Hill  
Holli-Pac, Inc.  
Mr. Rod Howe  
Mr. James Jarose  
Mr. L. William Kay

Mr. Daniel Kwarta	Attica Veterinary Associates	Mr. Jeffrey W. Eisen
Mr. Ronald E. Leal	Mr. Marshall W. Backus	Prof. J. Murray Elliot
Mr. & Mrs. Leo Lipkowitz	Mr. Daniel H. Bassett	Mr. David M. Emo
Ms. Celeste V. Lopes	Mr. Ronald Beck	Mr. Paul E. Eshelman
Ms. Jody L. Maneely	Mrs. Patricia Becker	Ms. Mary Lee Fairley
Ms. Kay Marshman	Ms. Teresa Becker	Mr. Charles J. Fausold
Moscato & Associates, Inc.	Mr. Douglas F. Beech	Mrs. Kimberly F. Fleming
Mr. John B. Mueller	Mrs. Ruth S. Bennett	Ms. Gayle R. Flinn
NBT Bank N.A.	Ms. Janet E. Berning	Ms. Janice Fox
Ms. Chrys P. Nestle	Mr. Eugene Blumer	Mrs. Ruth Fulton
Ms. Angela S. Northern	Mr. & Mrs. John S. Boor	Mr. & Mrs. Clark E. Garner
Orleans County 4-H Leaders Association	Mr. Edgar H. Borkhuis	Dr. Elaine Genkins
Mr. Dominick J. Porco	Mr. Steven E. Borkhuis	Ms. Patricia M. Gere
Dr. Dale S. Porter	Mrs. Ella Boxler	Mrs. Mary Goddard
Ms. Jill Porter	Ms. Barbara A. Boyer	Mr. William Goewey
Mr. Stephen Porter	Mrs. Marian V. Briggs	Mrs. Esther Goodfellow
Porterdale Farms	Prof. Muriel S. Brink	Mr. Paul M. Griffen
Ms. Sally Prather	Ms. Linda Brosch	Dr. Kenneth I. Gumaer
Mr. James C. Pratt	Mr. Eric Brown	Ms. Janice A. Gunther
Mr. Paul Rehm	Mr. Niles F. Brown	Dr. & Mrs. George E. Hahn
Mrs. Lydia M. Reidy	Mr. Jim Bubnack	Mrs. Constance Harper
Ms. Audrey L. Reith	Mr. Walter N. Butcher	Mr. Edward Harwood
Dr. Jane F. Robens	Mr. James Carmichael	Mr. & Mrs. Frank R. Hastedt
Mr. James M. Roberts	Ms. Mary Louise Cartledge	Mr. Henry Heiman
Rockbridge Investment Mgmt., LLC	Ms. Pamela A. Castro	Mrs. Betty Higgins
Mr. John W. Schroff	CCE of Yates County	Mr. & Mrs. Rudolf Hoering
Mr. Andrew Schwytzer	Ms. Lois Chaplin	Mrs. Nancy Hourigan
Mrs. Marjorie Shafer	Mr. and Mrs. Howard M. Chrisfield	Mr. John E. Howard
Dr. & Mrs. Francis A. Simpson	Mrs. Natalie M. Cobb	Ms. Patricia Hubbard
Mr. John C. Sterling	Ms. Jennifer L. Collins	Ms. Katherine J. T. Humphrey
Ms. Sylvia Stevens-Buczek Mrs. Jose- phine Swanson	Mrs. Euleta Colvin	Ms. Mary Ann Huntley
Ms. Mary G. Swartz	Mrs. Virginia L. Conner	Mr. Theodore Jenkins
Mr. Ned Tudi	Ms. Patricia B. Coon	Ms. Catherine Jenne
Ms. Esther F. Twentyman	Mr. John T. Cowdery	Charla F. Jennings
Dr. Gerald R. Vukman	Mr. Richard T. Coyne	Mr. & Mrs. Joseph F. Kerzick
Professor Michael Walter	Rev. Paul E. Credle	Mrs. Mariane Kiraly
Mr. & Mrs. Meyer J. Wolin	Ms. Julie A. Curren	Ms. Carolyn Klass
Mr. Allen S. Woodward	Mr. Alfred Dalrymple	Mrs. Bernice Kneller
Mr. Stephen Wright	Ms. Linda Davies	Mr. Thomas M. Kolberg
<b>Green Clover</b>	Mr. H. Thomas Davis	Mr. William M. Lampkin
<i>\$1.00 to \$99.99</i>	Mr. & Mrs. Paul De Andrea	Ms. Courtney Law
Mr. & Mrs. John R. Adams	Mr. Ronald C. Denniston	Mr. David S. Leggett
Ms. Edith A. Anderson	Mr. Bob Dicker	Mrs. Carol A. Lindo
Mr. Wayne Arnold	Ms. Helen Domske	Mrs. Karen S. Livingston
Ms. Gret Atkin	Mr. Paul M. Dudley	Mr. Albert R. Lounsbury
	Mr. James W. Dwyer	Mr. Preston Lucas
	Ms. Marcia Eames-Sheavly	Mr. Roy Luft
	Prof. Edward O. Eaton	Dr. & Mrs. Robert E. Lynk
		Mrs. Evelyn H. Mackey

## Thank You to Our Friends

Ms. Stephanie D. Mallozzi  
Mr. Charles W. Malone  
Mr. Theodore W. Markham  
Mr. & Mrs. Raymond Martin  
Mr. & Mrs. V. Joseph  
McAuliffe  
Mr. Sydney C. McEvoy  
Mrs. Florence Merle  
Ms. Bessie A. Merrill  
Ms. Marilyn R. Meyer  
Mr. Amos J. Minkel  
Mr. Lewellyn S. Mix  
Mr. Timothy P. Moag  
Ms. Elaine M. Noble  
NYS 4-H Agents Association  
Mr. Douglas G. Olin  
Ms. Barbara O'Neill  
Ms. Connie Parmiter  
Mrs. Margaret J. Pauquette  
Mrs. Mary Pech  
Ms. Bonnie S. Peck  
Mr. Joseph D. Peck  
Mr. & Mrs. James A. Peischel  
Ms. Alice Pelton  
Ms. Madeline E. Pennington  
Mr. Preston E. Pierce  
Mr. Mason W. Place  
Mr. Thomas K. Platten  
Mr. J. Michael Quintavalle  
Ms. Kelly A. Radzik  
Mr. & Mrs. Stanley J. Reeves  
Mr. Larry L. Rhonemus  
Mrs. Dorianne E. Riggs  
Ms. Nancy Robertson  
Mr. Richard A. Robinson  
Mr. Larry W. Rogers  
Mr. Robert Rogers  
Mrs. Mary Ann Rolland  
Mr. Philip G. Rubenstein  
Ms. Nancy Schaff  
Ms. Barbara D. Schmied  
Mr. Michael A. Scozzari  
Ms. Debra SeGuin  
Mr. Timothy Setter  
Dr. Stephen Q. Shafer  
Mrs. Margaret L. Shear  
Mr. Steve Shelley  
Miss Mary A. Smith

Mr. Cleave T. Snow  
Mr. Dave Sowter  
Ms. Jessica L. Spence  
Mrs. Ida Mae Stitham  
Ms. Margaret J. Story  
Ms. Kathleen Swift  
Mr. V. Clark Switzer  
Ms. Jo Dee Tatich  
Mrs. Glenon Thomas  
Prof. Michael L. Thonney  
Dr. James W. Thorp  
Ms. Megan E. Tiff  
Ms. Ann Timmons  
Mr. David H. Tracy  
Mr. & Mrs. Gregg F. Travis  
Mrs. Eileen M. Troise  
Ms. Amanda Trzcinski  
Mrs. Barbara S. Turner  
Mr. Walter Van Buren  
Mr. & Mrs. John W.  
Van Tassell  
Mr. James H. VanArsdale  
Mrs. Janice VanEtten  
Ms. Mary Ellen Dwyer Vasile  
Mr. Timothy J. Veazey  
Dr. George & Rev. Joanne  
Vineyard  
Ms. Karen Wadsworth  
Ms. Angela B. Waligora  
Mr. Francis Ward  
Mrs. Raymond B. Webster  
Mrs. Linda E. Wegner  
Ms. Carol J. West  
Mr. & Mrs. William Wickham  
Dr. Bruce Widger  
Mr. Frank Wiles  
Mr. Robert Williams  
Mr. Douglas R. Wilson  
Ms. Patricia Zellmer

*A special thank you to the following contributors who have made gifts in honor or in memory of a family member or friend:*

### **In Memory of Ray Chamberlain**

*By Mrs. Ray Chamberlain*

### **In Honor of Mariane and Rick Darfler**

*By Roy Luft*

### **In Honor of Ellen Elliott** and her induction to the National 4-H Hall of Fame

*By the NYS 4-H Agents Association*

### **In Honor of James Law**

*By Courtney Law*

### **In Honor of Barb Schirmer**

*By:  
Kermit & Carol Bossard  
Herbert & Mary Lou Brewer  
Linda Brosch  
Jacqueline Davis-Manigaulte  
Ellen P. Elliott  
Paul Eshelman  
Jean T. Griffiths  
Rod Howe  
Mr. & Mrs. V. Joseph McAuliffe  
Larry Rogers  
Debra SeGuin  
John C. Sterling  
Josephine Swanson*

### **In Memory of Edward Schano**

*By:  
Herbert & Mary Lou Brewer  
Timothy Davis  
Prof. & Mrs. Clark Garner  
Thomas & Gretchen Jeffers  
Theodore & Barbara Jenkins  
Carolyn Klass  
Ronald & Erika Leal  
V. Joseph & June McAuliffe  
Marilyn Meyer  
Margaret Story  
Allan & Barbara Turner  
Allen & Trudy Woodward*

## Professor Edward Schano Memorial Fund

In 2010 a memorial fund was established in memory of Professor Emeritus Edward Schano. Hired as a Poultry Specialist at Cornell in 1953, Ed was responsible for the 4-H Poultry Science Program. And the rest, as they say, is history. NYS 4-H Poultry Judging Teams became legend at national competitions. 4-H Educators and youth willingly gave up their Saturdays to attend Ed's regional training schools. As youth learned about poultry science, the real message they learned was that they could become whatever they wanted to be.

Ed is perhaps most widely known for developing the 4-H Incubation and Embryology project. After 40 years it continues to be the most widely used 4-H school enrichment program. It is used by over 4,000 teachers annually to stimulate the learning of over 80,000 students, from pre-school to college science classes, in topics that range from science, math, and English to reproductive history.

Ed retired from Cornell as Professor Emeritus in 1986. He is survived by his wife Mary, 15 children, 41 grandchildren, and 22 great grandchildren. His first wife Evelyn passed away in 1965. Over his 33 year career, Ed touched the lives of thousands of youth and adults. Not only was he an excellent teacher; his joyfulness, enthusiasm, and caring nature made him an inspiration to many.

Thank you to the donors who contributed a total of \$895.00 in memory of Prof. Schano.

*"Ed was my idol when I became a 4-H Agent. He was an exceptional person and I was proud to have him as a guide and friend."*

*- Don Jewett*

"4-H has taught me several life lessons, has allowed me to respect and stay involved with my family heritage in agriculture and given me the opportunity to meet new people, venture to places across the nation and expand my horizons."

-Matthew Sweeney,  
2010 Opportunity  
Scholarship Recipient



If you use the internet, here is a simple and free way to support the NYS 4-H Foundation – just use GoodSearch.com and GoodShop.com.

**GoodSearch.com** is Yahoo-powered search engine that donates half its advertising revenue to the charities its users designate.

**GoodShop.com** is an online shopping mall which donates up to 30 percent of each purchase to your favorite cause! Hundreds of great stores participate and each time you place an order, you'll be supporting us! If you download the GoodSearch toolbar, these donations are initiated automatically.

Simply go to **www.GoodSearch.com**. In the box directly under "We Donate to Your Favorite Cause" type in **4H-New York State** then click "Get Started."

Every search counts, so check out GoodSearch.com today!

# Statement of Financial Position

*New York State 4-H Foundation, Inc.  
December 31, 2010*

<b>Revenues:</b>	<b>2010</b>	<b>2009</b>
Contributions	76,151	\$89,675
Special Events	25,105	23,335
Interest & Investment Earnings	105,638	41,829
Grant Revenue & Recoveries	42,005	46,834
Other	6,945	4,022
<b>Total Revenues, Gains &amp; Other Support</b>	<b>\$255,844</b>	<b>\$205,695</b>

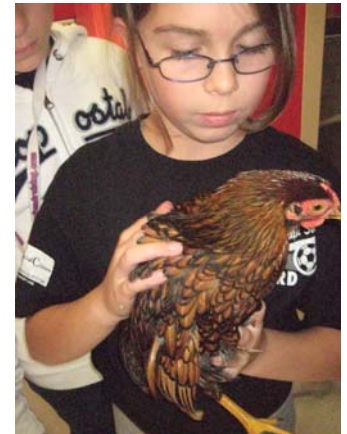
<b>Expenses:</b>		
Program Services	\$185,266	\$148,705
Management & General	50,217	81,128
Fundraising	73,385	93,998
<b>Total Expense</b>	<b>\$308,868</b>	<b>\$323,831</b>
<b>Changes in Net Assets</b>	<b>\$(53,024)</b>	<b>\$(118,136)</b>



*Excerpts from the 2010 Chenango County After School Program (Bainbridge, NY) "The Best thing about 4-H After School":*

"I love 4-H because the teachers are nice and I love animals too. I have lots of fun with them."  
Makenna, age 8

"The best thing about 4-H After-School is that you learn and it's lots of fun."  
Evan, age 8



In 2010, the Foundation was the recipient of a generous \$25,000 donation from the Margaret Sorensen Charitable Trust. Ms. Sorensen cared deeply about children and this gift from her estate was given to the NYS 4-H Foundation because the 4-H programs it supports help to improve the lives of children. Projects supported through this gift include the 4-H Robotics Program, Choose Health Club Officer Program, Science Toolkits, and SET (Science, Engineering and Technology) program support.

You too can leave a lasting legacy by investing in the well-being of today's youth. Consider joining our Emerald Clover Legacy Society by designating a planned gift to the NYS 4-H Foundation.

**T**he Emerald Clover Legacy Society recognizes individuals who, as a consequence of their belief in the values of 4-H, have designated a planned gift to support 4-H programs in New York. Membership is a reflection of an individual's foresight and commitment to the future of 4-H youth development.

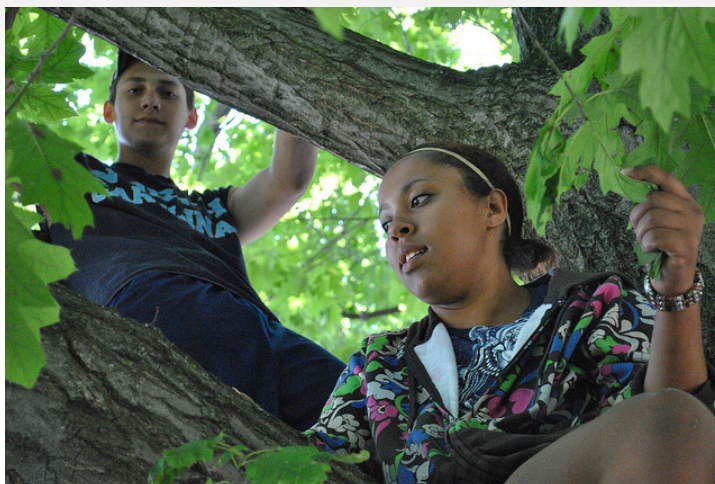
A Planned Gift can provide the means for you to make a significant gift to 4-H while providing benefits to you and your family. You may enjoy long-term financial security, increase income, or reduce or eliminate taxes. Through an estate plan, you can decide which organizations will benefit from your assets in the future.

### Your Legacy

You can make a difference in the lives that follow by including the New York State 4-H Foundation in your estate plans. Whether you think of yourself as rich or poor, or somewhere in between, your gift can make a difference. Even a small amount can have a big impact over time. You will enjoy the satisfaction of ensuring that future generations of youth will have the opportunity to learn new skills, develop life-long values and experience the fun and excitement of 4-H. Their work, and the lives they touch, can be your legacy.

**Membership is easy!** There are no fees or minimum investments required to join the Society. Anyone who has made a planned gift to the New York State 4-H Foundation and completed a Declaration of Intent form is eligible for membership in the Emerald Clover Legacy Society.

If you have not included 4-H in your estate plans, please consider an investment in the New York State 4-H



Participants in the 2010 "Youth Grow" 4-H Career Explorations

Foundation through a bequest in your will, life insurance policy, appreciated securities, or a retirement fund. If you have already included the Foundation in your plans, please let us know so that we can recognize your generosity and plan for the future.

Whatever your goals and circumstances, planned giving can help you provide for your family, while making the ultimate gift to 4-H youth. Make a difference today—include the New York State 4-H Foundation in your estate plan.

### *Make a lasting difference in the lives of one of our most valuable resources—today's youth*

*"4-H has been a major part of my life since I was 8-years-old. My parents were volunteer 4-H Club leaders and encouraged my involvement. For over 33 years, I was a CCE 4-H youth development educator and county executive director. 4-H supported me and my family and in turn I want to ensure and support its future. My planned gift to the NYS 4-H Foundation will help 4-H continue to help kids do better in school, learn to help others, and feel more capable and responsible."*

*-Al Woodward*

For more information, please contact the NYS 4-H Foundation at (315) 702-8242 or email to:  
[NYS4-HFoundation@nys4hfoundation.org](mailto:NYS4-HFoundation@nys4hfoundation.org).

*Please consult your financial advisor or estate planning attorney to determine the best plan for you.*



The New York State 4-H Foundation, Inc.  
248 Grant Ave., Suite II-A • Auburn, NY 13021

## Make a lasting difference in the lives of one of our most valuable resources —today’s youth

*You can provide opportunities for 4-H’ers across New York by supporting the NYS 4-H Foundation. Gifts of any size are welcome and are tax-deductible. Giving is easy and may be made in several ways.*

### Cash/Credit Card

Make your check payable to:  
The NYS 4-H Foundation  
Mail to: NYS 4-H Foundation,  
248 Grant Ave., Suite II-A, Auburn, NY 13021

**Donate Online** Have your credit card information ready and follow these easy steps:  
1. Visit our website at [www.nys4hfoundation.org](http://www.nys4hfoundation.org)  
2. Select How to Give,  
3. Select Donate Now

*Or telephone:* (315) 702-8242 with your credit card information.

### Appreciated Securities or Stock

Gifts of appreciated securities or stock can be one of the most advantageous ways of giving. If your gift is a stock you have owned for more than one year, you may deduct the full fair market value of the stock as a charitable contribution, while eliminating capital gains taxes. This type of gift enables many of our friends to contribute more than would otherwise be possible.

### Corporate Matching Gifts

Double or triple your gift! Many employers will match your gift to the Foundation. Simply submit a matching gift form, which is usually available from your human resources department, with your gift. You will be recognized for the value of your gift plus the match.

### Planned Gifts

Learn about our Emerald Clover Legacy Society and how you can support 4-H through a planned gift on page 15.

*Short on  
Special occasion  
gift-giving ideas?  
Celebrate birthdays,  
anniversaries and  
holidays by making  
a gift in honor of  
your loved ones.  
Better yet—  
ask your loved ones  
to make a gift  
in your name!*

“4-H has been a huge part of my life. I’ve been in 4-H for eleven years now, and I am the third generation of my family involved in 4-H. . . 4-H has made me who I am today.”

- Jared Reed, 2010 Opportunity Scholarship Recipient